

IP Ethernet over 2Wire Transceiver with PoE

Product Features

- High data rate - Up to 200Mbps
- Small form factor for Limited Space installation site
- One Master extender can support up to Multiple Slave extender using Terminal block splitter and bridge the two wire
- Long range Ethernet data extension over 2Wire Max. 1,000 feet. (300 meters)
- Enhanced Crosstalk Free feature for multiple installation (One power supply for MDU installation)
- 2Wire Polarity Free feature, which does not care 2Wire installation Polarity
- Power DC Jack Polarity Free feature, which does not care Power installation Polarity
- Automatic Quality of Service (QoS) features for seamless network streaming
- Anti-Vibration Terminal Block feature for Harsh Installation Sites
- IEEE 802.3 af/at Compliant PoE for PoE Powered Device(PD), Wi-Fi AP, IP Intercom, IP camera, VoIP
- Easy configuration and No IP address & network setup required

Product Description

The Easy2Wire+™, model C4L6400-2W-P is the Crosstalk Free IP Ethernet over 2Wire transceiver. It support up to 200Mbps data transfer speed for IP Intercom, IP Camera, IP Networking, Game Console and AV Device application. Its small form factor could support the small and narrow area installation application in Home, Residential Building and large building.

Small Form Factor

C4L6400-2W-P have a small size form factor (40 x 42 x 76 mm, H x W x L) for the small and narrow area installation site. Its small form factor helps for the most camera housings.

Long Distance Data Transfer Coverage

C4L6400-2W-P support up to 300 meters distance full-duplex data transfer coverage. It could re-use the legacy 2Wire cable in Home, Residential Building and large building. It transports the High Definition content, Mass-Storage information and Data Streaming service to the remote installation sites without any delay.



Polarity and Crosstalk Free features

C4L6400-2W-P support the 2Wire and Power DCJack Polarity Free features for the installation fields. This features help the simple and easy installation for the complex installation situation.

Also, it support Crosstalk Free features for the MDU installation fields.

1 Master to Multi Slave network topology

C4L6400 Series product support the 1 Master to Multi slave network topology. Its network topology could support various network topology (Star, BUS, Ring, Mesh and etc.). Also, it reduce the installation costs dramatically.

Ready for Multi-Dwelling Unit (MDU) installation

C4L6400-2W-P have the robust immunity for cross-talk problem. Also, it support the auto-negotiation data throughput features for Multi-Dwelling Unit (MDU) installation site. It helps to prevent the network conflict and critical network errors.

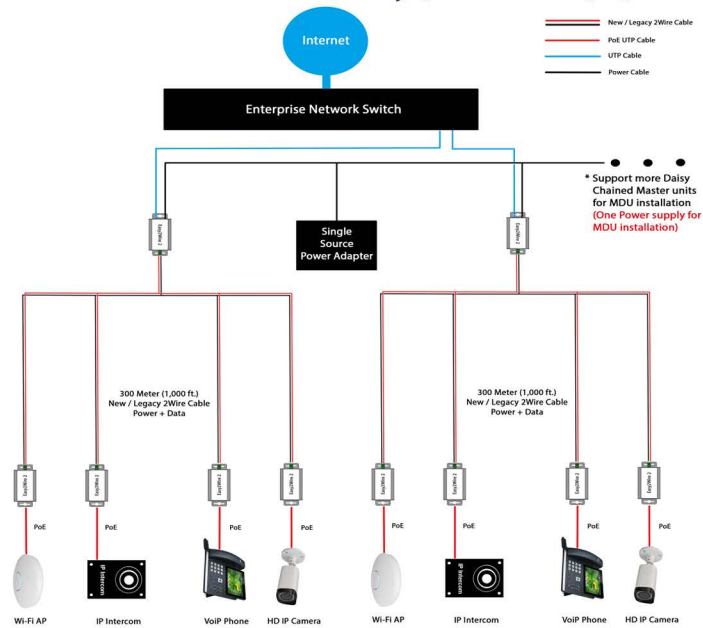
IEEE 802.3 af/at 40W PoE+

C4L6400M-2W-P support the IEEE 802.3 af/at 40Watts PoE+ feature for PoE IP Intercom, IP Camera, Powered device(PD), Wi-Fi AP, VoIP and etc. It reduce the wiring cost for power supply at the remote installation sites.

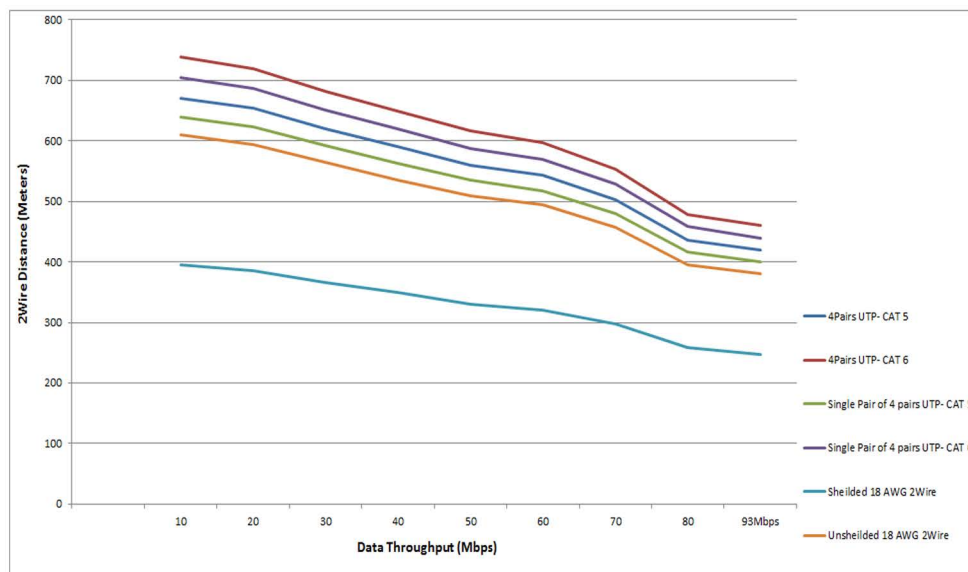


Standards	Ethernet Specification IEEE 802.3, IEEE 802.3u, IEEE 802.3x, Auto MDI/X
Protocols	TDMA & CSMA/CA
Transmission Speeds	Ethernet : 10 / 100 Mbps Extended 2Wire : 200 Mbps
Modulation	Modulation : OFDM – 1024/256/64-QAM, QPSK, BPSK, ROBO
Frequency Band	1.8 ~ 30 MHz
Security	128 Bit AES Encryption
Power Consumption	2.5 Watts
AC to DC Power Supply	Input AC : 100 ~ 240 VAC, 50 ~ 60 Hz 5V to 56VDC / 1A ~ 1.6A (For PoE Function, please use 48V 0.83A Adapter at least.)
Ethernet Interface	- Connector Type : RJ45 - Speed : 10/100 Base T, half/full duplex, auto-negotiation
PoE Standard	IEEE 802.3 af/at PoE+ 40Watts
Extended Port Interface	- Connector Type : 2Wire Terminal Block - Impedance : 25Ω ~ 100Ω - Support Cable : 2Wire, Cat 5., Cat 5E., Cat 6., Cat 6E., Cat 7.
IGMP	- Support IGMP managed multicast sessions - IGMP snooping with multicast to multiple unicast support - IGMP/MLD Address Filtering
LED Indication	- Power : BLUE – Power On - TWP : Green – Link On - PoE : Green – Link On
Mechanical Dimension	40 x 42 x 76 mm, 1.02 x 1.65 x 2.75 in (H x W x L)
Weight	120 g (4.2 oz)
Material	Aluminum Extruded
Temperature	- Operating Temperature : -10°C ~ +50°C (+14°F ~ +122°F), i-Temp Ver. : -40°C ~ +80°C - Storage Temperature : -30°C ~ +70°C (-22°F ~ + 158°F), i-Temp Ver. : -40°C ~ +80°C
Humidity	10 ~ 90 % Humidity (non-condensing)
Certifications	CE Class A, FCC
Polarity & Crosstalk Free Features	2Wire, Power DCJack Polarity and Crosstalk Free features

C4L6400-2W-P(Ver2.) Typical Application



C4L6400-2W-P(Ver2.) Wire Distance & Data Throughput



C4L6400-2W-P(Ver2.) Power Distance Chart

